



Stainless Steel Preparation 1570 mm Stainless Steel Shelving with 4 Solid Shelves

ITEM # _____

MODEL # _____

NAME # _____

SIS # _____

AIA # _____



132948 (NSC1570)

Stainless steel Shelving with
4 solid shelves, 1570mm

Short Form Specification

Item No. _____

Made in stainless steel. The two intermediate shelves are height-adjustable. Load capacity per shelf: average of 150 kg/m², evenly distributed.

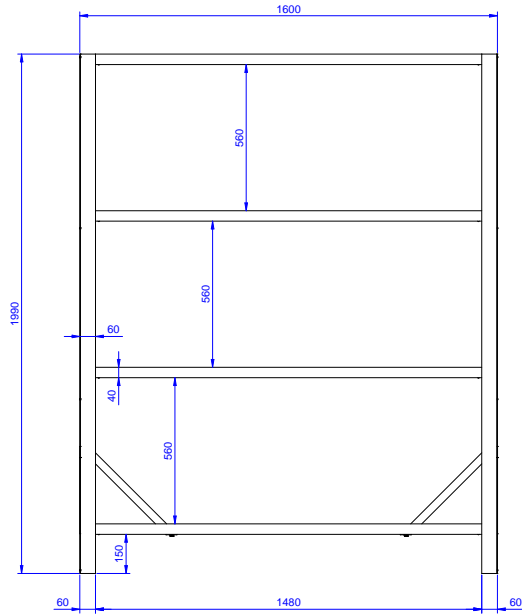
Construction

- Designed to bear a maximum total load of 600kg; the load can be positioned at various heights thanks to the shelves.
- Model constructed entirely in stainless steel, with solid stainless steel shelves.
- Heavy duty construction entirely in AISI 304 stainless steel to offer maximum durability.

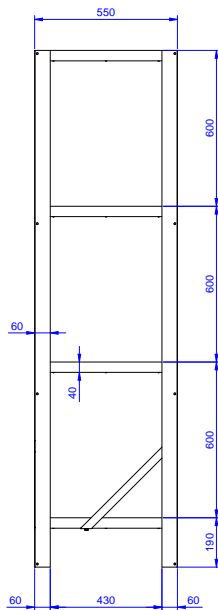
APPROVAL: _____



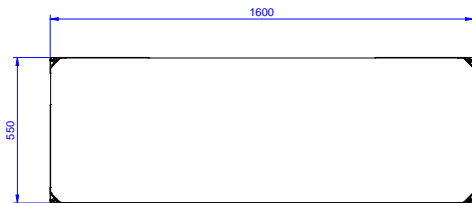
Front



Side



Top


Key Information:

| | |
|------------------------------|-----------|
| External dimensions, Width: | 1600 mm |
| 132948 (NSC1570) | |
| External dimensions, Depth: | 550 mm |
| External dimensions, Height: | 1990 mm |
| Max loading weight: | 600 Kg kg |
| Shelves number: | |
| Net weight: | 45 kg |